

SOUSVIDETOOLS

IVIDE WIFI COOKER



USER GUIDE



IMPORTANT - READ BEFORE USE

Please read this user manual carefully before using the appliance.

Please note: This item only works when immersed in water. Running the item out of water will display an EE1 error code.

Keep these instructions with the appliance.



- Remove all protective packaging and wrapping.
- Check to make sure the appliance is undamaged. In case of incomplete delivery or damages,
- DO NOT use the appliance and contact the supplier (See Warranty). Clean the appliance before use (See Cleaning and Maintenance).
- Attach the appliance securely at the side of the container.
- Do not operate the appliance near any heated sources or flammable objects. Ensure the appliance is completely dry.
- Note: Due to manufacturing residues, the appliance may emit a light odor during the first few uses.

HINTS ON DISPOSAL

According to the European waste regulation 2012/19/EU this symbol on the product or on it's packaging indicates that this product may not be treated as household waste. Instead it should be taken to the appropriate collection point for the recycling of electrical and electronic equipment. By ensuring this product is disposed of correctly, you will help prevent potential negative consequences for the environment and human health, which could otherwise be caused by inappropriate waste handling of this product. For more detailed information about recycling of this product, please contact your local council or your household waste disposal service.

SAFETY REGULATIONS

- This appliance is intended for commercial use only and must not be used for household use.
- The appliance must only be used for the purpose for which it was intended and designed. The manufacturer is not liable for any damage caused by incorrect operation and improper use.
- Keep the appliance and electrical plug away from water and any other liquids. In the event that the appliance should fall into water, immediately remove plug from the socket and do not use until the appliance has been checked by a certified technician. Failure to follow these instructions could cause a risk to lives.
- Never attempt to open the casing of the appliance yourself.
- Do not insert any objects in the casing of the appliance.
- Do not touch the plug with wet or damp hands.
- Danger of electric shock! Do not attempt to repair the appliance yourself. In case of malfunctions, repairs are to be conducted by qualified personnel only.
- Never use a damaged appliance! Disconnect the appliance from the electrical outlet and contact the retailer if it is damaged.
- Warning! Do not immerse the electrical parts of the appliance in water or other liquids. Never hold the appliance under running water.
- Regularly check the power plug and cord for any damage. If the power plug or power cord is damaged, it must be replaced by a service agent or similarly qualified persons in order to avoid danger or injury.
- Make sure the cord does not come in contact with sharp or hot objects and keep it away from open fire.
- To pull the plug out of the socket, always pull on the plug and not on the cord.
- Ensure that the cord (or extension cord) is positioned so that it will not cause a trip hazard.
- Always keep an eye on the appliance when in use.
- Turn off the appliance before pulling the plug out of the socket.
- Never carry the appliance by the cord.
- Do not use any extra devices that are not supplied along with the appliance.
- Only connect the appliance to an electrical outlet with the voltage and frequency mentioned on the appliance label.
- Connect the power plug to an easily accessible electrical outlet so that in case of emergency the appliance can be unplugged immediately. To completely switch off the appliance pull the power plug out of the electrical outlet.
- Always turn the appliance off before disconnecting the plug.
- Never use accessories other than those recommended by the manufacturer. Failure to do so could pose a safety risk to the user and could damage the appliance. Only use original parts and accessories.
- This appliance is not intended for use by persons (including children) with reduced physical, sensory or mental capabilities, or lack of experience and knowledge.
- This appliance must not be used by children under any circumstances.
- Keep the appliance and its cord out of reach of children.
- Always disconnect the appliance from the mains if it is left unattended or is not in use, and before assembly, disassembly or cleaning.
- Never leave the appliance unattended during use.

SPECIAL SAFETY REGULATIONS

- The appliance is intended only for cooking food packed in vacuum bags at the precisely controlled temperature in household use. Any other use may lead to damage of the appliance or personal injury.
- Do not use this appliance for cooking food products, heating substances which are flammable, dangerous or otherwise unsafe.
- Use the appliance only as described in this manual.
- Caution! Hot surface! The temperature of the surface is hot during use. Hold the handle or upper part of the appliance.
- Never use the appliance near explosive or flammable materials, credit cards, magnetic discs or radios.
- This appliance is not intended to be operated by means of an external timer or separate remote control system.
- Keep the appliance away from any heat sources and open flames.
- Do not use the appliance near explosive or flammable materials, credit cards, magnetic discs or radios.
- The appliance should be mounted vertically to the container.
- During use, put the food for heating inside the water container, make sure the water level should be controlled between the lowest water level "MIN" and the highest water level "MAX", to avoid damage to the appliance.
- Only water should be heated with this appliance. Other liquids could damage the appliance. Do not use the appliance without water inside.
- Never cover the appliance with foils, cloths, etc while using.
- Check the water temperature with the temperature display. Do not touch the water.
- Do not use hard utensils to hit the heating plate surface. Do not use water jet, flush directly with water or steam cleaner as the parts will get wet and electric shock might be resulted.
- Do not clean or store the appliance unless it is completely cooled down.

GROUNDING INSTALLATION

This appliance is classified as protection class I appliance and must be connected to a protective ground

Grounding reduces the risk of electric shock by providing an escape wire for the electric current. This appliance is equipped with a cord having a grounding wire with a grounding plug. The plug must be plugged into an outlet that is properly installed.

SOUS VIDE COOKING

"Sous Vide" is a precise cooking technique which cook food at lower temperature under longer period of time. The essence of food is retained and cook to perfection. Vegetables can retain its nutritional value as well.

PRODUCT STRUCTURE



The iVide WIFI Cooker consists of the heating element, the propeller, and the LCD control panel.

The appliance gives the user versatile choice of the size and shape of the heat resistant container used for the preparation of the water bath.

- Control panel: The control panel operates independently of the iVide App, allowing the user to control the temperature and time using the touch panel.
- Adjustable hinge: The control panel can be swiveled to allow easy access and storage.
- Clamp: located in the heat resistant plastic housing, it maintains the sous vide unit in the circulator stick container in a vertical position. Bags filled with food are cooked in water.
- Heating element: The element is located inside the stainless steel housing in order to ensure the adequate protection and safety. It reaches the temperature up to 90°C.
- Circulator: The circulator spins during operation and circulates water around the bags with food, providing equal temperature distribution.

PRODUCT FUNCTION



On/Off

Press once to switch the appliance on, press again to switch it off. Press and hold for 3 seconds to choose between °C and °F. When you select the temperature and time of cooking, pressing the Start/Stop button will start the appliance. NOTE: the temperature display flashes until the set temperature is reached. When the set temperature is reached, the display stops flashing, and the alarm is activated.

Settings

The Settings button flashes when the device is switched on. Switching between functions is controlled by a single touch of the display in the following sequence: Temperature setting - Hour settings - Minute settings.

WI-FI Button

Use the button to connect the mobile device via the iVide App.

+ / - Button

Use the button to increase or decrease the temperature and time setting, after selecting the appropriate function.

THE APP

Downloading The iVide WIFI Cooker APP

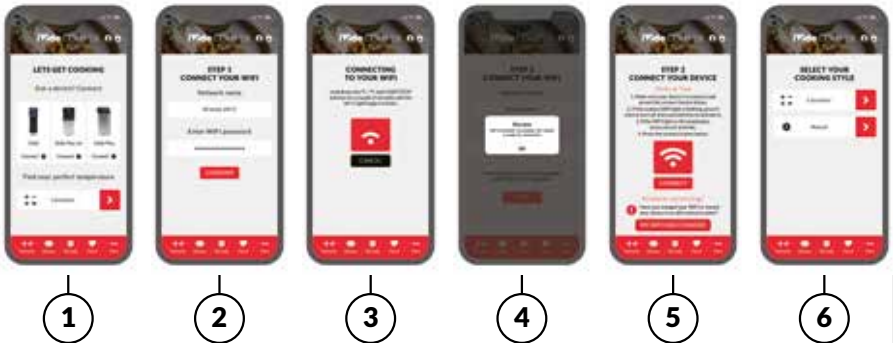
If the iVide WIFI Cooker APP has not yet been downloaded, it can be downloaded from the Apple Store (IOS) or Google Play (Android). It is compatible with IOS version 9.3.5 and later. It is compatible with Android version 4.3 and later.

Note: Please check with your mobile phone or device's manufacturer if you have a question about downloading APP.

Six Steps To Configure The iVide WIFI Cooker APP

Installing the iVide WIFI Cooker APP is quick, in contrast to some other apps. The iVide APP allows instant use, providing the necessary information exactly when you need it. We have developed a completely new approach to this kind of applications because every moment in the kitchen should be unforgettable. The APP is compatible with the iVide WIFI Cooker with Wi-Fi. The App makes cooking with the iVide WIFI Cooker incredibly easy. Simply select the food, adjust the settings, and press Start.

Six Easy Steps



- 1 Select the appliance you want to use, and press "CONNECT".
- 2 The app will detect a connected Wi-Fi network. Enter the password and press 'Confirm'.
- 3 The application starts searching for the iVide WIFI Cooker. Hold down the °C / °F and START/ STOP buttons for a couple of seconds until the Wi-Fi light begins to flash. Wait until the appliance finishes automatic configuration.
- 4 At the end, you will see a message confirming the appliance is ready to be connected.
- 5 Make sure the Wi-Fi light has stopped flashing and then press the 'Connect' button. If you need help, read the hints and tips on the display.
- 6 Congratulations! The iVide WIFI Cooker has just been configured! Enjoy your cooking!

Note: The Apple and iPhone logos are trademarks of Apple Inc., registered in the USA and other countries. Apple Store is a service mark of Apple Inc. Android; Google Play and Google Play logo are trademarks of Google Inc.

OPERATION

- Place the iVide WIFI Cooker in a heat resistant container that is sufficiently deep to hold the device using the clamp.
- Fill the container with water level between the MIN and MAX markings on the heating element housing.
Note: Placing vacuum bag with food will increase the water level. Check the water level afterwards to ensure that it does not go beyond MAX marking.
- Connect the power cable to the power supply. Press the Start/Stop button.

A: VIA THE CONTROL PANEL

1. Use the 'Settings' button to select 'Temperature' and then set the desired value with the '+' and '-' buttons.
2. Press again the 'Settings' button to select the required number of hours, again using the '+' and '-' buttons.
3. Press again the 'Settings' button to select the required number of minutes, once again using the '+' and '-' buttons.
4. When you select the temperature and time of cooking, press the Start/Stop button to start the appliance. After reaching the required temperature, the alarm triggers and the temperature led stops flashing. Place the bag in water. CAUTION! Water will be hot.
5. After reaching the set cooking time, remove the bag from the hot water using kitchen tongs.
6. Finish the cooking process by searing the meat in a pan to obtain the taste of fried meat and crunchy crust. Add a little butter and briefly sear the cooked meat on both sides.
7. After the cooking process is finished, disconnect the device from the power supply and leave it to cool down before cleaning. To avoid any risk of burns, leave the water to cool before pouring it from the container.

B: BY USING THE IVIDE APP (REPLACES STEPS 1 TO 3)

Connect the device (if this is the first time you perform this operation, please refer to the information above). Select the recipe or use the calculator and then follow the directions on the display. The application will automatically select the correct temperature and time of cooking. Select 'Start cooking'. The iVide WIFI Cooker will start heating water to the set temperature. For safety reasons do not place bags with food in water before reaching the set temperature.

COMPATIBILITY DISCLAIMER

Wireless performance is dependent on your device's WI-FI wireless technology, please refer to your device's manufacturer. SousVideTools.com will not be liable for any loss of data or leakage resulting from the use of these devices.

RECIPE CALCULATOR

The handy table below shows cooking time and temperature values for popular dishes. The iVide App contains more recipes and the App's easy to use calculator allows successful preparation of various dishes.

Dish	Weight	Temperature (°C)	Cooking time
Beef steak - rare	225g	52-53	60 mins
Beef stake - medium rare	225g	55-56	50mins
Beef steak - Medium	225g	58	45mins
Beef tenderloin - rare	3kg	52	6 hours
Beef tenderloin - medium rare	3kg	55	5 hours 30 mins
Beef tenderloin - medium	3kg	58	5 hours
Beef ribs	2kg	58	60 hours
Chicken breast	225g	62	1 hour 30 mins
Chicken leg (on the bone)	150g	68	1 hour
Pork bacon	2kg	62	72 hours
Pork chop	350g	63	1 hour 45 mins
Poached egg	n/a	63	45 mins
Baby carrots	n/a	75	1hour 30 mins
Asparagus	n/a	85	15 mins

CLEANING & MAINTENANCE

Attention: Always unplug the machine from the electrical power outlet and let it cool down completely before cleaning & storage.

CLEANING

- Never immerse the machine in water or other liquids.
- Clean the cooled exterior surface with a slightly damp cloth or sponge with some mild soap solution.
- Never use abrasive sponges or detergents, steel wool or metallic utensils to clean the interior or exterior parts of the appliance.

MAINTENANCE

- All servicing of internal parts must be performed by the authorized service personnel. In case of any doubt, please contact customer support.

STORAGE

- Before storage, always make sure the machine is disconnected from the electrical outlet and cooled down completely.
- Store the machine in a cool, clean and dry place and make sure the lid is closed and secured with the clamp.

TROUBLESHOOTING

If the appliance does not function properly, please check the below table for the solution. If you are still unable to solve the problem, please contact the supplier/service provider.

Error	Possible Cause	Troubleshooting
The appliance does not switch on.	Power cord is not connected properly with the power socket The ON / OFF button has not pressed.	Check again the power to make sure it is connected properly. Press the ON / OFF button to start operation.
E5 shown on the display.	The water drops below the MIN marking.	Make sure the water level is between the MAX and MIN markings during operation.
E2 shown on the display.	The digital thermostat is broken.	Contact the supplier

TECHNICAL SPECIFICATION

Item:	IVIDE WIFI COOKER
Operating voltage & frequency:	220 – 240V~ 50Hz
Rated input power:	800W
Protection class:	Class 1
Waterproof protection class:	IPX7
Temperature range:	25°C ~ 90°C
Network details:	Compatible standards: IEEE 802.11 b/g/n Frequency band: 2,412MHz -2,484MHz Operating frequency/Maximum output power: 2,412MHz - 2,484MHz / < 20,0dB

WARRANTY

Any defect affecting the functionality of the appliance which becomes apparent within one year after purchase will be repaired by free repair or replacement provided the appliance has been used and maintained in accordance with the instructions and has not been abused or misused in anyway. Your statutory rights are not affected. If the appliance is claimed under warranty, state where and when it was purchased and include proof of purchase (e.g. receipt).

In line with our policy of continuous product development we reserve the right to change the product, packaging and documentation specifications without notice

DISCARDING & ENVIRONMENT

At the end of the life of the appliance, please dispose of the appliance according to the regulations and guidelines applicable at the time. Throw packing materials like plastic and boxes in the appropriate containers.

STATEMENT ON COMPLIANCE

- The following information is only applicable to equipment sold in countries applying EU directives.
- This equipment is intended to be used with the iVide WIFI Cooker APP and is verified to comply with the essential requirements of the Directive 2014/53/EU.
- We hereby declare that this equipment (item no.: 224076) is in compliance with the essential requirements and other relevant provisions of Directive 2014/53/EU.
- The full text of the EU Declaration of conformity is available below and the following internet address: www.SousVideTools.com



sousvidetools.com

HEADQUARTERS

Central Barn, Claughton Business Park,
Hornby Road, Claughton, Lancaster, LA2 9JX

0800 678 5001

01524 770 060

enquiries@sousvidetools.com

www.sousvidetools.com

