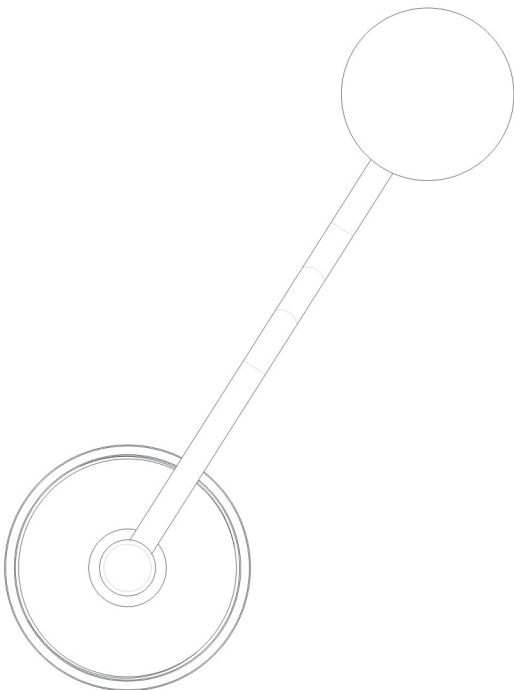
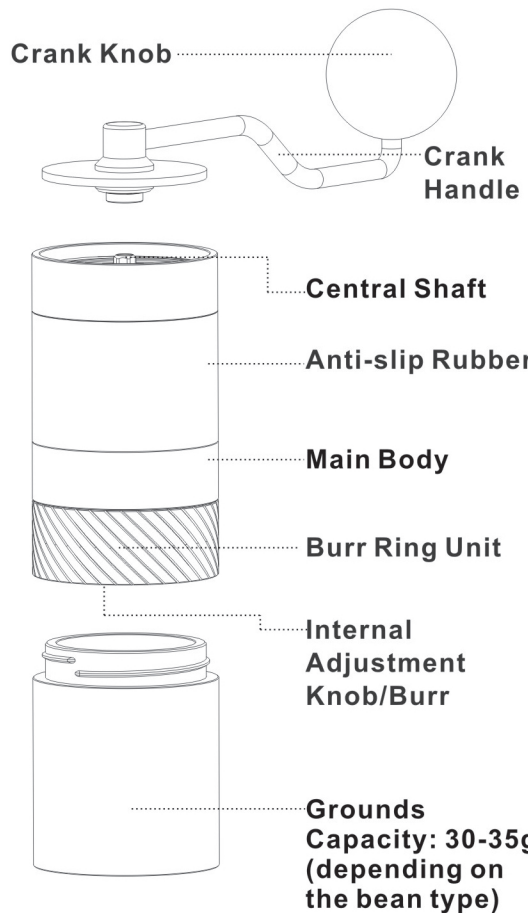




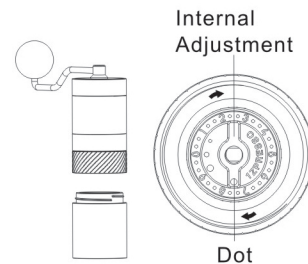
J Series Manual Coffee Grinder



Expanded View



User Instructions



1) Adjusting the Grind Setting

Move the adjustment dial clockwise to make the grinds finer and shift the dial counterclockwise to make the grinds coarser

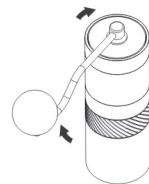
- To begin, install the crank handle/lid and hold in place to prevent rotation.
- Turn the adjustment dial clockwise until it is at its tightest position. The number marked by the dot is the starting point. Please note, the number may not be 0.
- From the starting point, simply move the adjustment dial counterclockwise to your preferred grinding degree.
- Each complete rotation adjusts the grinds by 0.75mm, and there are 10 numbers and 30 clicks in a rotation.
- Please refer to the grind setting reference guide for a suggestion of the ideal setting for various brewing methods.

2) Grinding the Coffee

- Load a maximum of 35g of coffee into the upper bean chamber and replace the lid/crank handle.
- Rotate the crank handle clockwise until all the beans are ground.

2) Grinding the Coffee

- Load a maximum of 35g of coffee into the upper bean chamber and replace the lid/crank handle.
- Rotate the crank handle clockwise until all the beans are ground.



More information is available on our website: <https://1zpresso.co> or scan the QR code on last page.

Precautions

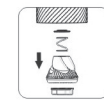
- Ensure the grinder is never washed or cleaned with water.
- To ensure longevity, keep the grinder in a dry location.
- Please follow the instructions properly for disassembly and reassembly, paying attention to the order of parts and their correct position.
- This is not a toy. Keep the grinder out of reach of young children to ensure their safety.

Deep Cleaning Guide

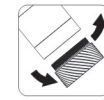
Note: Do not remove the Burr Ring Holder before step 2.



1. Deep cleaning involves dismantling the grinder to gain access to all the parts independently. To begin, install the crank handle unit and hold in place to prevent rotation. Twist the adjustment dial counterclockwise until it detaches.



2. The adjustment dial, inner burr, shaft spring and lower bearing cap, respectively, will now detach from the bottom. Take note of their order for reassembly.



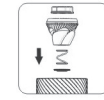
3. The burr ring unit can now be unscrewed by twisting in clockwise motion.

4. Using a clean, dry brush and blower, clean each of the parts.

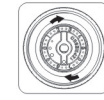
Reassembly



1. Attach the burr ring unit by screwing counterclockwise in the relative positions. Tighten to hand-tight so that it is firmly attached but can be removed.

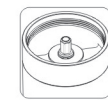


2. Place the following parts into the bottom of the shaft chamber in their respective order: lower bearing cap (convex side facing upward), spring, conical burr, and adjustment dial. Screw the adjustment dial clockwise to place it into its position.



3. While locking the rotation of the crank handle with your other hand, twist the adjustment dial in a clockwise position until reaching the lowest grind setting.

Warning: DO NOT attempt to further disassemble or remove the following components:



Central Shaft



The burr ring unit and outer burr



The bearings attached to the upper shaft chamber

