



VECTOR® MULTI-COOK OVENS ACCESSORIES

Delivering an unmatched volume and variety of food, Vector Multi-Cook Ovens with exclusive Structured Air Technology® offer up to four ovens in one—each chamber with independent temperature, fan speed and cook time controls. This individual chamber design allows for simultaneous, high-quality cooking with zero flavor transfer between chambers. Achieve ultimate menu variety and set your foodservice operation up for success with an assortment of accessories for cooking, cleaning and more.



Pizza Screens

Pizza screens guarantee that pizza is cooked to perfection, with a crispy crust and all, every time.



Pan, Pizza Screen 14"
[Part #PR-47175]

PRODUCT DIMENSIONS
14" [355mm]

VECTOR MODELS
VMC-H2, VMC-H2H, VMC-H3, VMC-H3H,
VMC-H4, VMC-H4H, VMC-F3, VMC-F4



Pan, Pizza Screen 16"
[Part #PR-47176]

PRODUCT DIMENSIONS
16" [406mm]

VECTOR MODELS
VMC-F3, VMC-F4

Probes [Available in Vector F only]

Ensure accurate cooking temperatures and capture HACCP data with a variety of probes designed to be easily inserted and removed from ovens.



Probe
[Part #PR-35770]

PRODUCT DIMENSIONS
1000 mm

VECTOR MODELS
VMC-F3, VMC-F4



Probe
[Part #PR-35487]

PRODUCT DIMENSIONS
1600 mm

VECTOR MODELS
VMC-F3, VMC-F4



Probe
[Part #PR-36201]

PRODUCT DIMENSIONS
820 mm

VECTOR MODELS
VMC-F3, VMC-F4

Shelves

Make the most of your oven with a variety of shelves designed to optimize oven space and effortlessly execute every dish.



Wire shelf, Half-Size Sheet Pan
[Part #SH-37662]

PRODUCT DIMENSIONS
18-1/2" x 14-3/4" x 1"
[470 x 374 x 25]

VECTOR MODELS
VMC-H2, VMC-H3, VMC-H4



Wire Shelf, Hotel Pan
[Part #SH-39077]

PRODUCT DIMENSIONS
20-1/2" x 14-3/4" x 1"
[520 x 374 x 25]

VECTOR MODELS
VMC-H2H, VMC-H3H, VMC-H4H



Cooking Grate, Hotel Pan
[Part #SH-39078]

PRODUCT DIMENSIONS
9 3/4" x 17-15/16"
[247 x 431]

VECTOR MODELS
VMC-H2H, VMC-H3H, VMC-H4H



Cooking Grate, Half Pan
[Part #SH-39087]

PRODUCT DIMENSIONS
11 3/4" x 16-1/2"
[298 x 419]

VECTOR MODELS
VMC-H2, VMC-H3, VMC-H4



Wire Rack
[Part #SH-39201]

PRODUCT DIMENSIONS
20-5/8" x 26-3/4" x 1"
[524 x 679 x 24]

VECTOR MODELS
VMC-F3, VMC-F4

Grease Filters

Extend equipment lifetime and ensure seamless cleaning with the addition of grease filters.

Filters



Kit, Filters, Internal Cavity [Order 1 Per Cavity]
[Kit Part #5027119]

PRODUCT DIMENSIONS
Side 15" x 3" x 1-5/8" [379 x 90 x 42]
Back 13-1/2" x 3-1/2" x 1-5/8"
[343 x 89 x 42]

VECTOR MODELS
VMC-H2, VMC-H2H, VMC-H3,
VMC-H3H, VMC-H4, VMC-H4H

Cleaning

Protect your investment with regular cleaning. From sprays to tablets to brushes, we have what you need to properly care for your equipment, ensure high-quality cooking results, keep employees safe and extend equipment lifetime.



Non-Caustic Oven Cleaner

[Part #CE-46828]

PRODUCT DIMENSIONS
Refer to Liquid Spec Sheet

VECTOR MODELS
VMC-H2, VMC-H2H, VMC-H3, VMC-H3H,
VMC-H4, VMC-H4H, VMC-F3, VMC-F4



Non-Caustic Oven Cleaner (case of six 6)

[Part #CE-46829]

PRODUCT DIMENSIONS
Refer to Liquid Spec Sheet

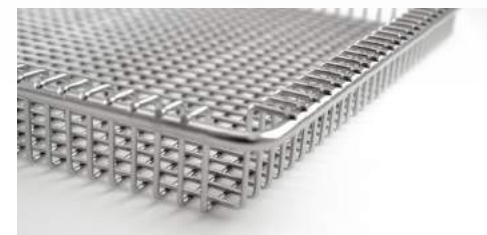
VECTOR MODELS
VMC-H2, VMC-H2H, VMC-H3, VMC-H3H,
VMC-H4, VMC-H4H, VMC-F3, VMC-F4

Cooking Accessories

Seamlessly execute your menu and introduce new menu items with a variety of cooking accessories. We offer a number of pans, racks, probes and more to help you achieve the menu versatility your customers are looking for.

Baskets

Add crispy, fried food to your menu without the traditional, oil-heavy deep fryer with our oven fry baskets.



Fry Basket

[Part #BS-26730]

PRODUCT DIMENSIONS
12-3/4" x 20-7/8" x 1-5/8"
[324 x 529 x 42]

VECTOR MODELS
VMC-H3H, VMC-H4H



Fry Basket

[Part #BS-46316]

PRODUCT DIMENSIONS
12-3/4" x 18" x 1-5/8"
[324 x 457 x 42]

VECTOR MODELS
VMC-H2, VMC-H2H, VMC-H3,
VMC-H3H, VMC-H4, VMC-H4H





Grill Pans and Accessories

Introduce grilled flavors to your menu—adding grill marks to any dish—without the need for traditional, labor-intensive grilling.



Grill Pan, Half Size

[Part #PN-39135]

PRODUCT DIMENSIONS

11" x 16"
[276 x 406]

VECTOR MODELS

VMC-H2, VMC-H2H, VMC-H3, VMC-H3H,
VMC-H4, VMC-H4H, VMC-F3, VMC-F4



Grill Pan, Full Size

[Part #PN-39474]

PRODUCT DIMENSIONS

18" x 26"
[448 x 660]

VECTOR MODELS

VMC-F3, VMC-F4



Pan, 5" indent Bread Form

[Part #PN-47326]

PRODUCT DIMENSIONS

17-3/4" x 13-3/16" x 1-3/16"
[450 x 335 x 30mm]

VECTOR MODELS

VMC-H2, VMC-H2H, VMC-H3, VMC-H3H,
VMC-H4, VMC-H4H, VMC-F3, VMC-F4



Half Sheet Egg Pan (9 Count)

[Part #PN-47178]

PRODUCT DIMENSIONS

18" x 13"
[457 x 330mm]

VECTOR MODELS

VMC-H2, VMC-H2H, VMC-H3, VMC-H3H,
VMC-H4, VMC-H4H, VMC-F3, VMC-F4



Egg Pan (6 Count)

[Part #PN-47177]

PRODUCT DIMENSIONS

18" x 11-1/4"
[457 x 285mm]

VECTOR MODELS

VMC-H2, VMC-H2H, VMC-H3, VMC-H3H,
VMC-H4, VMC-H4H, VMC-F3, VMC-F4



CORRUGATED GRILL PAN GN1/1

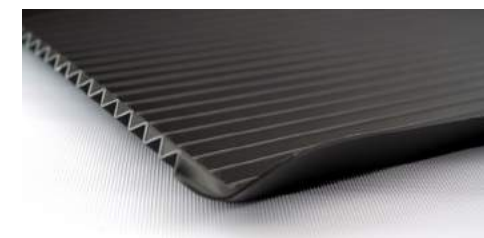
[Part #PN-47172]

PRODUCT DIMENSIONS

12-3/4" x 21"
[323 x 533mm]

VECTOR MODELS

VMC-H2, VMC-H2H, VMC-H3, VMC-H3H,
VMC-H4, VMC-H4H, VMC-F3, VMC-F4



CORRUGATED GRILL PAN 13"x18"

[Part #PN-47173]

PRODUCT DIMENSIONS

13" x 18"
[330 x 457mm]

VECTOR MODELS

VMC-H2, VMC-H2H, VMC-H3, VMC-H3H,
VMC-H4, VMC-H4H, VMC-F3, VMC-F4

Alto-Shaam specializes in creating products and system solutions that are the core of successful foodservice programs in a variety of industries throughout the world.



Full Line of Commercial Kitchen Equipment:

- Combitherm® Ovens
- Convection Ovens
- Cook & Hold Ovens
- Food Wells
- Heated Holding
- Smokers
- Quickchillers™
- Rotisseries
- Thermal Shelves & Carving Stations
- Merchandisers & Display Cases
- Vector® Multi-Cook Ovens



ALTO-SHAAM®